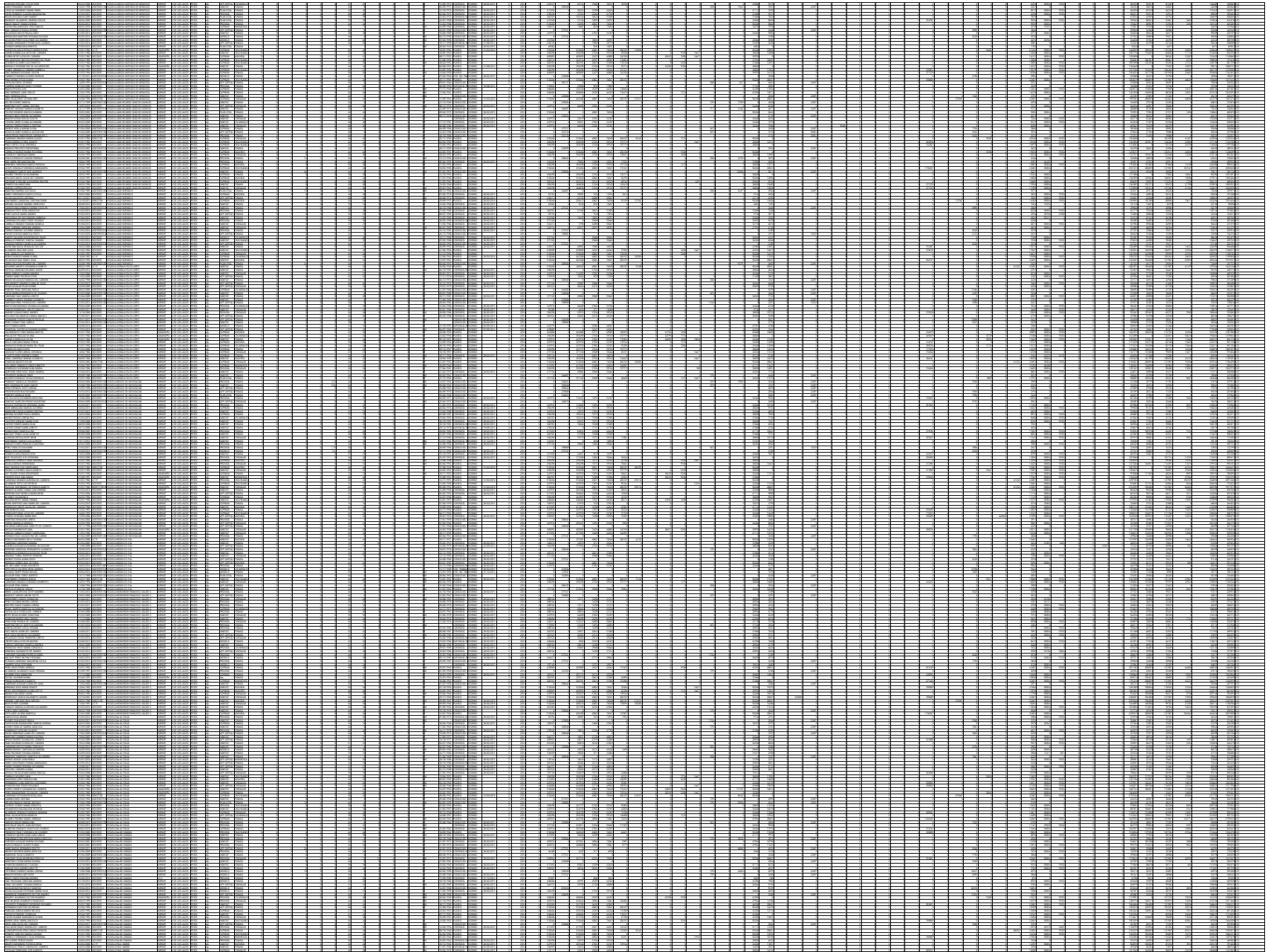
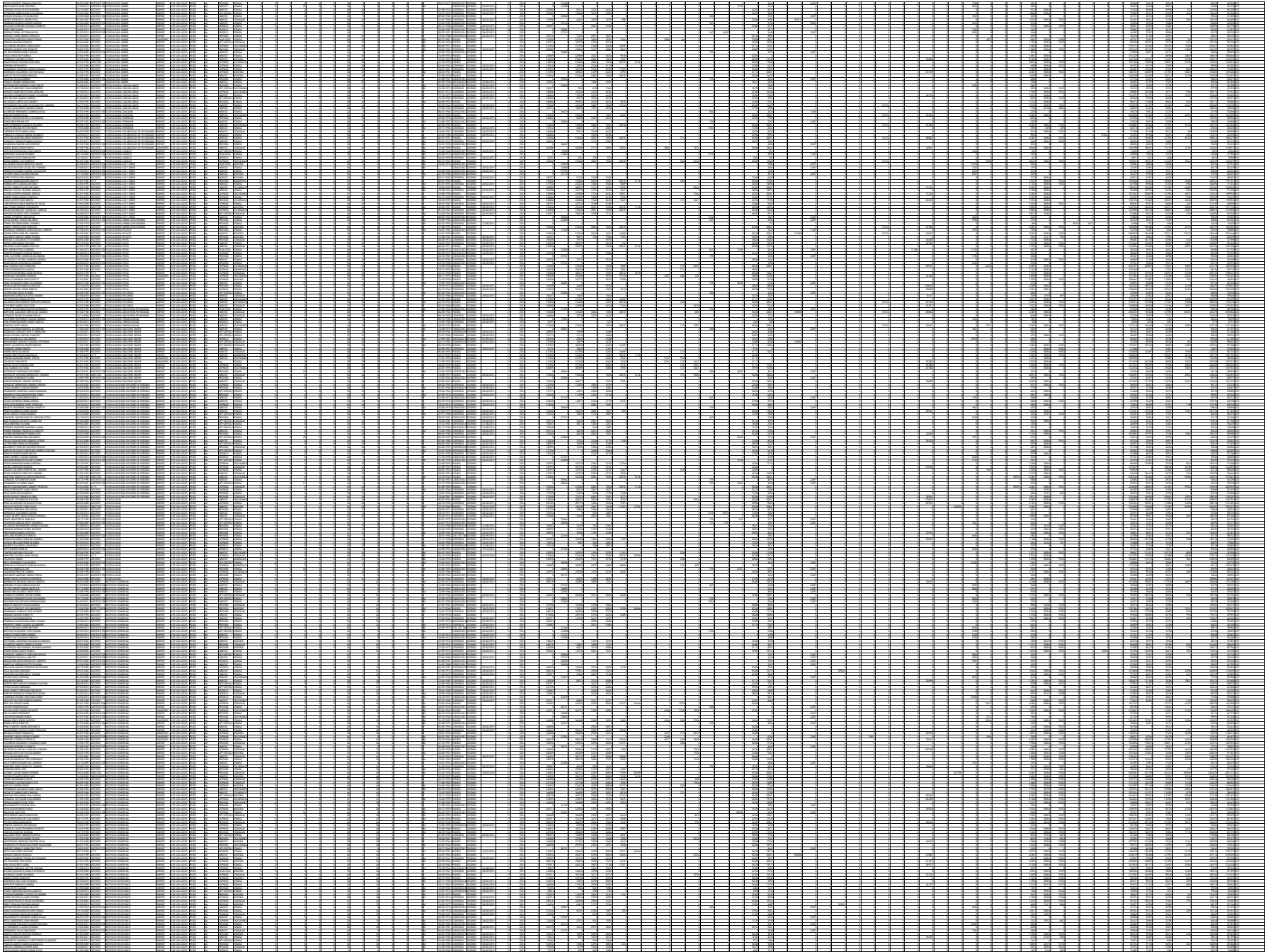
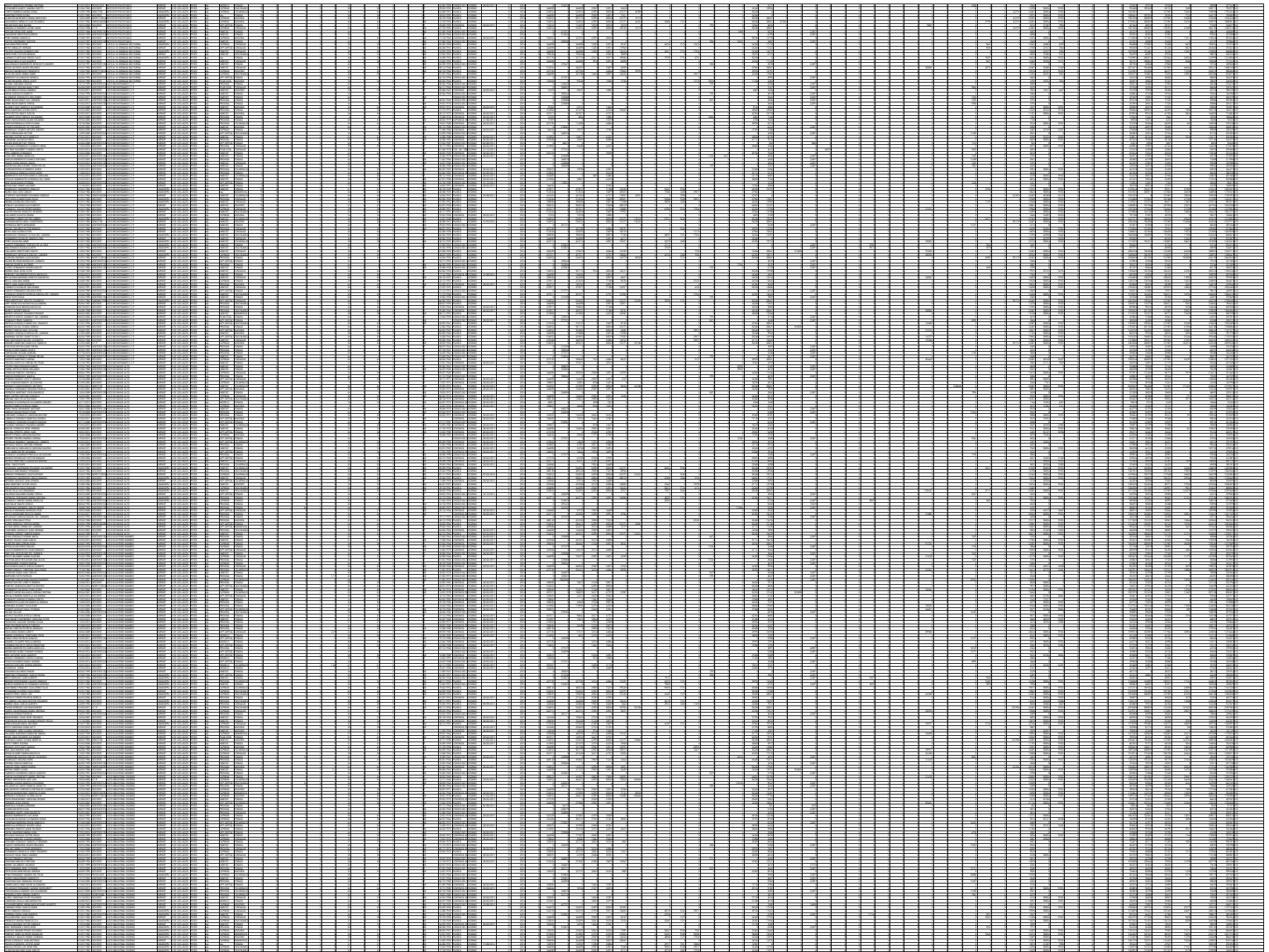


The image displays a large, empty grid of cells, characteristic of a spreadsheet or data table. The grid is composed of numerous rows and columns, with a header row at the top. The cells are currently blank, suggesting that the data has not yet been entered. The grid is bounded by a thin black line, and the overall appearance is that of a standard data entry form.







The image displays a large, empty grid table. The grid is composed of many small, uniform rectangular cells arranged in a regular pattern. The grid is oriented horizontally and occupies the upper portion of the page. The lines forming the grid are thin and black, creating a dense array of empty cells. There are approximately 30 columns and 20 rows visible in the grid.